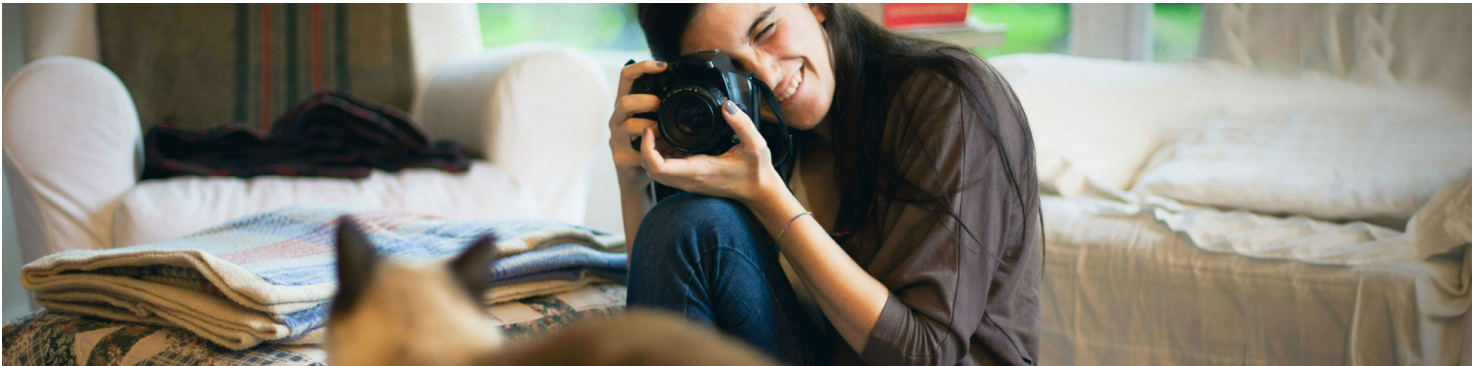




<http://www.eyesiteonwellness.com/>

Diabetes and Your Eyes



If you're one of the more than 26 million Americans with diabetes¹, you know how important it is to take good care of yourself. That includes watching your blood sugar, watching your diet—and looking out for your eyes.

If you're diabetic, proper eye care can lead to the early detection and early treatment of vision-related complications.

As a diabetic, you're at greater risk for eye problems. In fact, diabetes is the leading cause of blindness in adults ages 20-74.² However, proper eye care can lead to the early detection, and early treatment of vision-related complications, including:

Glaucoma — If you have diabetes, you are 40 percent more likely to develop glaucoma, according to the American Diabetes Association. Glaucoma occurs when increased fluid pressure in the eyes damages the nerve fibers in the optic nerve. While glaucoma can lead to irreversible vision loss, its progression can be slowed if it's detected and treated early.

Cataracts — A cataract clouds the eye's lens, which blocks the passage of light. The condition is typically associated with aging, but the American Diabetes Association says diabetics are 60 percent more likely to develop cataracts. Regular eye exams can help identify and lead to the treatment of cataracts before they affect your quality of life.

Diabetic Retinopathy — The leading cause of blindness among adults³, retinopathy is the most common eye complication in diabetic patients, affecting more than 4.4 million Americans age 40 and older.⁴ Because its initial symptoms are very slight or even unnoticeable, diabetic retinopathy often goes undiagnosed. However, it can be detected during an annual comprehensive eye exam. Once detected, it can be treated by laser surgery.

Annual, comprehensive eye exams should be an important part of your diabetic care. These exams can help detect changes in your vision early on, enabling prompt referral and treatment that can lessen the risk of vision loss. In addition, be sure to see your eye care provider if you notice any of the following changes to your vision:

- Blurry, double or cloudy vision
- Pain or pressure in one or both eyes
- Trouble with peripheral vision
- Floating or flashing lights
- Dark spots

Living with diabetes means looking out for your health through proper medication, close monitoring of blood sugar levels, a healthy diet, regular exercise—and regular vision care. When you take care of yourself, you can look forward to better disease management and minimizing vision complications.

1. Centers for Disease Control and Prevention, CDC News Release, 26 January 2011.
2. American Optometric Association, <http://www.aoa.org/x6814.xml> (<http://www.aoa.org/x6814.xml>).
3. NIH Medline*Plus*, “Leading Causes of Blindness,” <http://www.nlm.nih.gov/medlineplus/magazine/issues/summer08/articles/summer08pg14-15.html> (<http://www.nlm.nih.gov/medlineplus/magazine/issues/summer08/articles/summer08pg14-15.html>).
4. National Eye Institute, Prevent Blindness America[®].

These materials are designed to provide general information regarding health care topics, do not constitute professional advice nor establish any standard of care, and are provided without representations or warranties of any kind. Quotations, photos and videos are not from actual patients and your experience may be different. Your treating health care professionals are solely responsible for diagnosis, treatment and medical advice. The eye care professionals in your plan are independent practitioners who exercise independent professional judgment and over whom EyeMed has no control or right of control. They are not agents or employees of EyeMed. Eye care professionals do not take the place of your physician.