

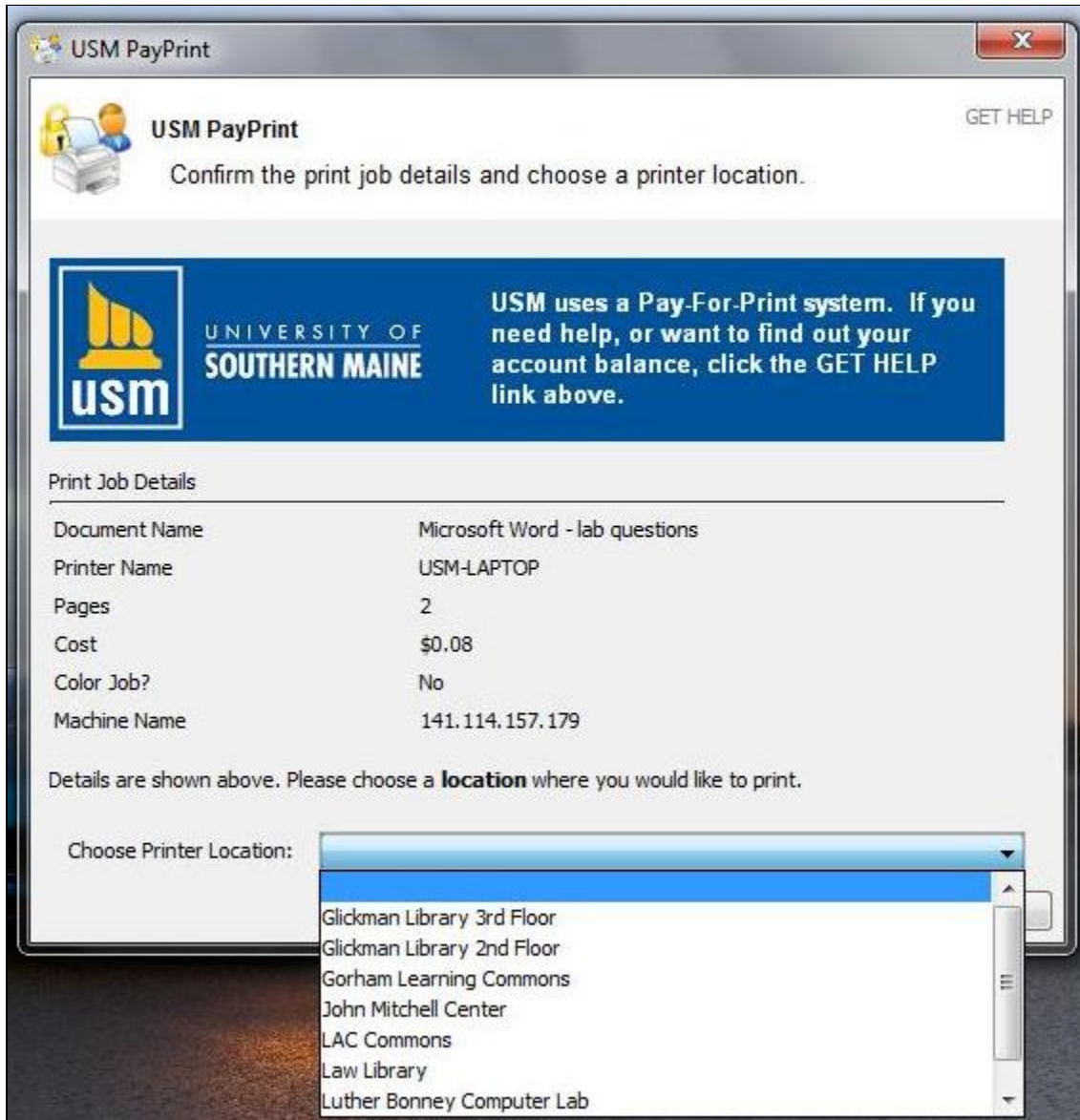
# Where does my paper come out when I print from my laptop?

## Where does my paper come out when I print from my laptop?

Once you have successfully install the Papercut print client on your Mac or PC you will be able to send documents directly to copier machines located in various locations on campus.

Copier machines are only able to print documents in standard letter format 8.5" x 11", single sided, black and white. Printing from within a webpage will not work most of the time due to formatting conflicts.

To choose a location select an option when you see this box:



- If you are in the Luther Bonney Computer Lab you select that option and your paper will come out of the copier located near the Lab Assistance Station.